



Runtz  
Miami, FL

Sample 432-042423-124

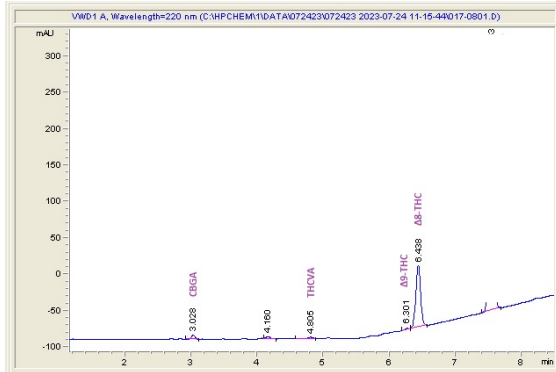
Tropical Punch

Sample Submitted: 04-24-2023; Report Date: 07-27-2023

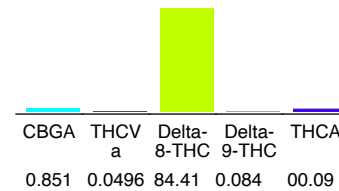
### Tropical Punch

Extract

#### Chromatogram



#### Cannabinoid Profile



#### Cannabinoid Profile by HPLC

**0.08%**  
Delta-9-THC

**0.00%**  
CBD

**85.05%**  
Total Cannabinoids

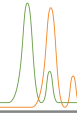
Cannabinoid	% wt	mg/g
CBGA	0.851	8.51
THCVa	0.0496	0.496
Delta-8-THC	84.41	844.10
Delta-9-THC	0.084	0.84
THCA	00.09	000.93
<b>Total Cannabinoids</b>	<b>85.05</b>	<b>852.5</b>
<b>Calculated CBD Yield</b>	<b>0.00</b>	<b>0.00</b>

Calculated Maximum CBD Yield = CBD + 0.877 \* CBDA

**Marin Analytics, LLC**  
250 Bel Marin Keys Blvd, Suite D4  
Novato, CA 94949  
833-321-TEST / info@marinanalytics.com

*Sara Biancalana*  
**Sara Biancalana**  
Chief Scientist

This sample has been tested by Marin Analytics, LLC using valid testing methodologies and a quality system. Values reported relate only to the sample tested. Marin Analytics, LLC makes no claims as to the efficacy, safety, or other risks associated with any detected or non-detected levels of any compounds reported herein. This Certificate shall not be reproduced except in full without the written approval of Marin Analytics, LLC. Copyright 2023 Marin Analytics, LLC All Rights Reserved.



**Runtz**  
Miami, FL

**Sample 432-072423-125**

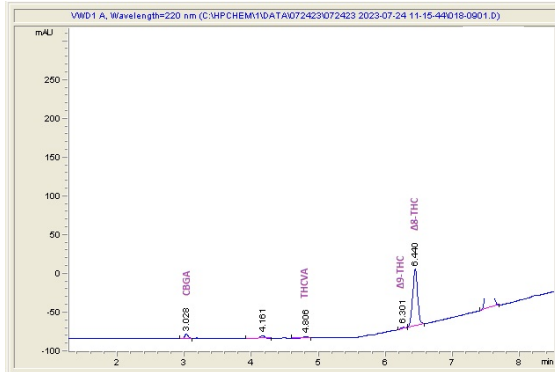
**Strawberry Lemonade**

Sample Submitted: 07-24-2023; Report Date: 07-27-2023

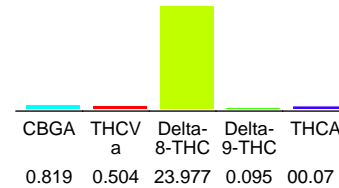
# Strawberry Lemonade

Extract

## Chromatogram



## Cannabinoid Profile



## Cannabinoid Profile by HPLC

**0.10%**

Delta-9-THC

**0.00%**

CBD

**87.66%**

Total Cannabinoids

Cannabinoid	% wt	mg/g
CBGA	0.819	8.19
THCVa	0.504	5.04
Delta-8-THC	86.24	862.24
Delta-9-THC	0.095	0.95
THCA	00.07	000.70
<b>Total Cannabinoids</b>	<b>87.66</b>	<b>876.6</b>
<b>Calculated CBD Yield</b>	<b>0.00</b>	<b>0.00</b>

Calculated Maximum CBD Yield = CBD + 0.877 \* CBDA

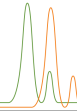
**Marin Analytics, LLC**

250 Bel Marin Keys Blvd, Suite D4  
Novato, CA 94949

833-321-TEST / info@marinanalytics.com

**Sara Biancalana**  
Chief Scientist

This sample has been tested by Marin Analytics, LLC using valid testing methodologies and a quality system. Values reported relate only to the sample tested. Marin Analytics, LLC makes no claims as to the efficacy, safety, or other risks associated with any detected or non-detected levels of any compounds reported herein. This Certificate shall not be reproduced except in full without the written approval of Marin Analytics, LLC. Copyright 2023 Marin Analytics, LLC All Rights Reserved.



Runtz  
Miami, FL

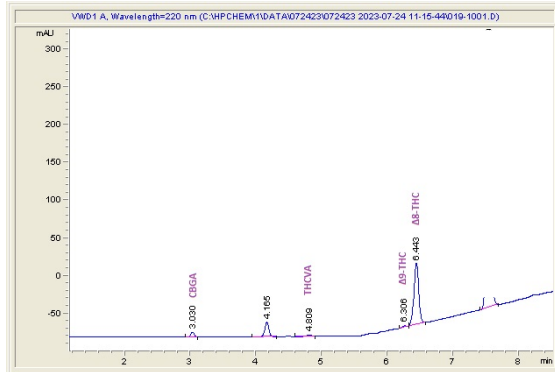
Sample 432-072423-126

Baja Blast

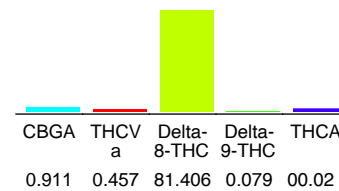
Sample Submitted: 07-24-2023; Report Date: 07-24-2023

Baja Blast  
Extract

### Chromatogram



### Cannabinoid Profile



### Cannabinoid Profile by HPLC

**0.08%**  
Delta-9-THC

**0.00%**  
CBD

**82.85%**  
Total Cannabinoids

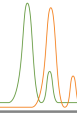
Cannabinoid	% wt	mg/g
CBGA	0.911	9.11
THCva	0.457	4.57
Delta-8-THC	81.406	814.60
Delta-9-THC	0.079	0.79
THCA	00.02	000.20
<b>Total Cannabinoids</b>	<b>82.85</b>	<b>828.5</b>
<b>Calculated CBD Yield</b>	<b>0.00</b>	<b>0.00</b>

Calculated Maximum CBD Yield = CBD + 0.877 \* CBDA

**Marin Analytics, LLC**  
250 Bel Marin Keys Blvd, Suite D4  
Novato, CA 94949  
833-321-TEST / info@marinanalytics.com

*Sara Biancalana*  
**Sara Biancalana**  
Chief Scientist

This sample has been tested by Marin Analytics, LLC using valid testing methodologies and a quality system. Values reported relate only to the sample tested. Marin Analytics, LLC makes no claims as to the efficacy, safety, or other risks associated with any detected or non-detected levels of any compounds reported herein. This Certificate shall not be reproduced except in full without the written approval of Marin Analytics, LLC. Copyright 2023 Marin Analytics, LLC All Rights Reserved.



**Runtz**  
Miami, FL

**Sample 432-072423-127**

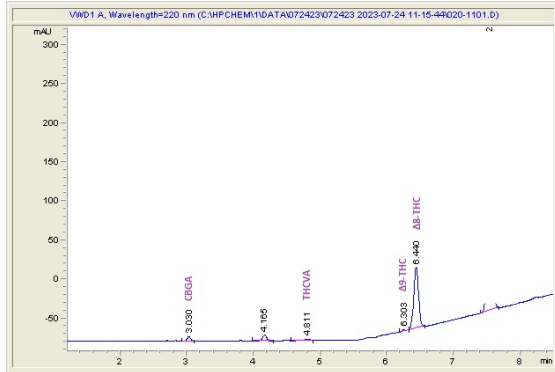
Passion Fruit Pop

Sample Submitted: 07-24-2023; Report Date: 07-27-2023

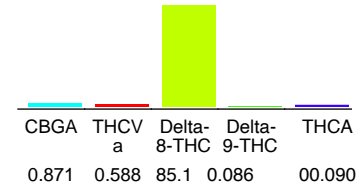
**Passion Fruit Pop**

Extract

**Chromatogram**



**Cannabinoid Profile**



**Cannabinoid Profile by HPLC**

**0.09%**  
Delta-9-THC

**0.00%**  
CBD

**86.73%**  
Total Cannabinoids

Cannabinoid	% wt	mg/g
CBGA	0.871	8.71
THCVa	0.588	5.88
Delta-8-THC	23.5	234.95
Delta-9-THC	0.086	0.86
THCA	00.09	000.90
<b>Total Cannabinoids</b>	<b>86.73</b>	<b>867.3</b>
<b>Calculated CBD Yield</b>	<b>0.00</b>	<b>0.00</b>

Calculated Maximum CBD Yield = CBD + 0.877 \* CBDA

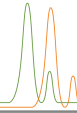
**Marin Analytics, LLC**

250 Bel Marin Keys Blvd, Suite D4  
Novato, CA 94949

833-321-TEST / info@marinanalytics.com

**Sara Biancalana**  
Chief Scientist

This sample has been tested by Marin Analytics, LLC using valid testing methodologies and a quality system. Values reported relate only to the sample tested. Marin Analytics, LLC makes no claims as to the efficacy, safety, or other risks associated with any detected or non-detected levels of any compounds reported herein. This Certificate shall not be reproduced except in full without the written approval of Marin Analytics, LLC. Copyright 2023 Marin Analytics, LLC All Rights Reserved.



**Runtz**  
Miami, FL

**Sample 432-072423-128**

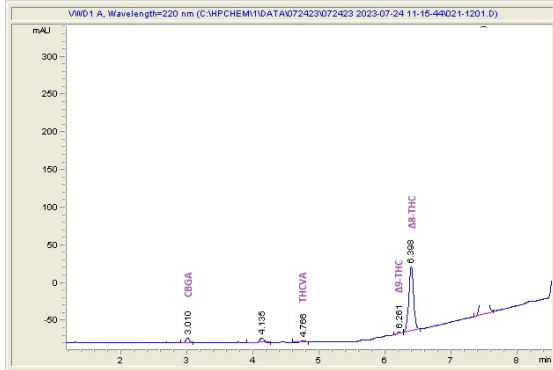
**Rainbow Cotton Candy**

Sample Submitted: 07-24-2023; Report Date: 07-27-2023

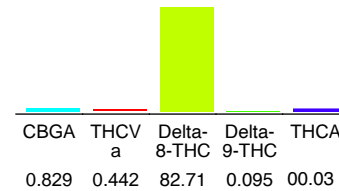
# Rainbow Cotton Candy

Extract

## Chromatogram



## Cannabinoid Profile



## Cannabinoid Profile by HPLC

**0.10%**  
Delta-9-THC

**0.00%**  
CBD

**84.08%**  
Total Cannabinoids

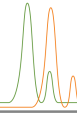
Cannabinoid	% wt	mg/g
CBGA	0.829	8.29
THCVa	0.442	4.42
Delta-8-THC	82.71	827.10
Delta-9-THC	0.095	0.95
THCA	00.03	000.30
<b>Total Cannabinoids</b>	<b>84.08</b>	<b>840.8</b>
<b>Calculated CBD Yield</b>	<b>0.00</b>	<b>0.00</b>

Calculated Maximum CBD Yield = CBD + 0.877 \* CBDA

**Marin Analytics, LLC**  
250 Bel Marin Keys Blvd, Suite D4  
Novato, CA 94949  
833-321-TEST / info@marinanalytics.com

*Sara Biancalana*  
**Sara Biancalana**  
Chief Scientist

This sample has been tested by Marin Analytics, LLC using valid testing methodologies and a quality system. Values reported relate only to the sample tested. Marin Analytics, LLC makes no claims as to the efficacy, safety, or other risks associated with any detected or non-detected levels of any compounds reported herein. This Certificate shall not be reproduced except in full without the written approval of Marin Analytics, LLC. Copyright 2023 Marin Analytics, LLC All Rights Reserved.



Runtz  
Miami, FL

Sample 432-072423-129

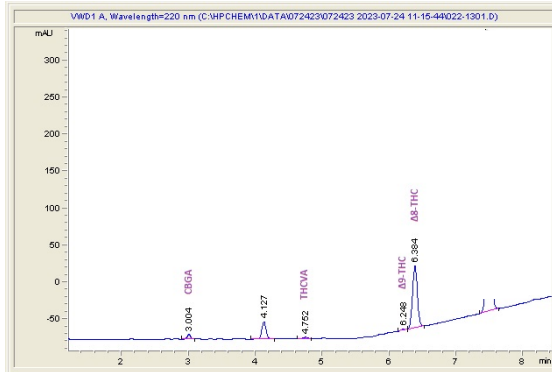
Pineapple Paradise

Sample Submitted: 07-24-2023; Report Date: 07-27-2023

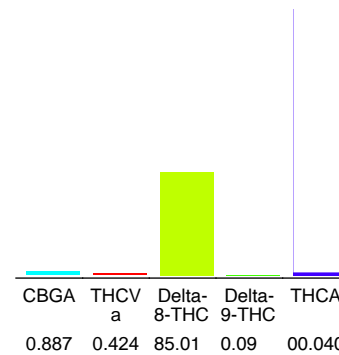
## Pineapple Paradise

Extract

### Chromatogram



### Cannabinoid Profile



### Cannabinoid Profile by HPLC

0.09%

Delta-9-THC

0.00%

CBD

86.58%

Total Cannabinoids

Cannabinoid	% wt	mg/g
CBGA	0.887	8.87
THCVA	0.424	4.24
Delta-8-THC	85.18	237.76
Delta-9-THC	0.09	0.9
THCA	00.04	000.40
<b>Total Cannabinoids</b>	<b>86.58</b>	<b>865.8</b>
<b>Calculated CBD Yield</b>	<b>0.00</b>	<b>0.00</b>

Calculated Maximum CBD Yield = CBD + 0.877 \* CBDA

#### Marin Analytics, LLC

250 Bel Marin Keys Blvd, Suite D4  
Novato, CA 94949

833-321-TEST / info@marinanalytics.com

**Sara Biancalana**  
Chief Scientist